

INSTALLATION GUIDE

TWF Roller Garage Doors Ltd

Units 1 & 4 Tradebase

The Street

Catfield

Norfolk

NR29 5AA

01603 737183

07834 408089

sales@twf-rollergaragedoors.co.uk

twf-rollergaragedoors.co.uk



Thank you for purchasing your TWF Roller Garage Door.

Please read the instructions carefully and if you have any questions, please feel free to contact a member of our team for advice. The video link can be found on our website.

Equipment required to install your roller garage door:



Pozi Screwdriver
Electric screwdriver
Hammer
Pencil
Stanley Knife
Tape Measure
Hacksaw or cutting disc
STS Drill
7mm Masonry drill bit
7mm Metal drill bit
10mm Metal drill bit
Spirit Level
Sealer gun

Please check your TWF Roller Garage Door Kit for damage and double check the door is the right size **before** removing your current door.



You will need at least two people to install your new garage door. For a larger 77mm roller door we advise 2-4 people.

Remove the old garage door and framework, if being removed, and sweep down all brick work.

MEASURING THE GUIDE RUNNERS FOR A BEHIND FIT

1. Place the spirit level on the bottom of the lintel of the garage opening. If it is level, mark one pencil mark each side at the bottom of the lintel on the brickwork. If the lintel is not level, mark 2 level pencil marks on the brickwork either side of the opening close to the bottom of the lintel.



2. For a TWF55 you will need at least 210mm from the underside of the lintel to the ceiling or roof rafters. For a TWF77 you will need 305mm. If you do not have this space, then measure down from the lowest point on the ceiling / roof rafters 210mm for TWF55 and 305mm for TWF7. Make a pencil mark on the wall where the guide runners will be fitted and level the line across to the adjacent wall and make another pencil mark.
3. Measure from the floor where your new guide runners are going to be installed to the pencil marks and cut your guide runners at these measurements. ('F' on the guide runners represents the front of the guide runners which will be the side which fits against the wall. For best results please cut the guide runners at the bottom.) To cut the guide runners either use a metal hacksaw or a cutting disc.



DRILLING THE FIXING HOLES FOR A BEHIND FIT

1. Place the cut guide runners where they are going to be installed and mark at least 3 x holes on the box section of each guide runner, one 100mm from the top and one 100mm from the bottom, and at least one more in the middle of these. (Try to mark the fixing holes on brick work or where you are going to get a good fixing point).



2. Place the guide runners 'F' side down and drill all the way through the box section from the back with a 7mm metal drill bit.



3. With a metal 10mm drill bit drill just the back section of the box section.

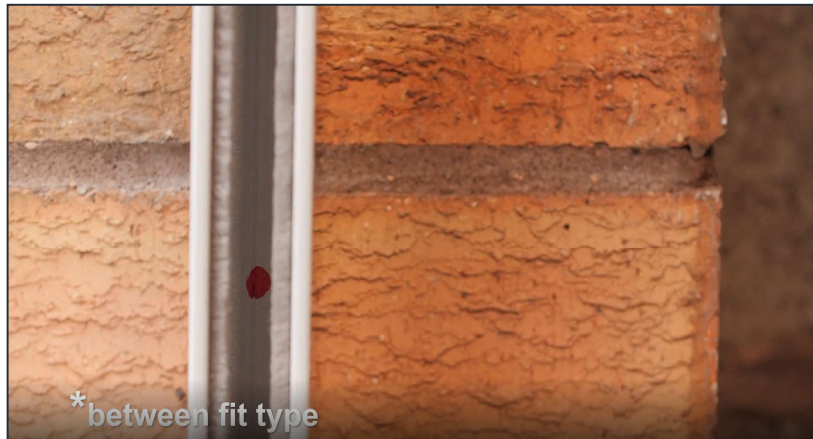
(DO NOT DRILL ALL THE WAY THROUGH THE BOX SECTION).

MEASURING THE GUIDE RUNNERS FOR A BETWEEN AND UNDER THE LINTEL FIT

1. Place the spirit level on the lintel and make sure it is level. If it is not level, then from the lowest part of the lintel level a line across and make a pencil mark on the wall under the lintel.
2. Measure from the bottom of the lintel or the levelled lines 210mm for a TWF55 and 305mm for a TWF77. Make a pencil mark either side where your guide runners are going to be installed.



3. Measure from the floor to the pencil marks and cut your guide runners at these measurements. (For best results cut the guide runners at the bottom using a metal hacksaw or cutting disc).
4. Place the guide runners each side where they are going to be installed and mark the guide runners where you are going to fix them. Mark at least 100mm from the top and 100mm from the bottom and at least one more fixing mark between these. (Try and mark the fixing holes on brick work or where you are going to get a good fixing point).



5. Place the guide runners on their edge so the open mouth part of the guide runner is facing down. Drill all the way through the box section you have marked with a 7mm metal drill bit, turn them over so the mouth of the guide runner is facing up and drill only the first section of the box section with a 10mm metal drill bit. (DO NOT DRILL ALL THE WAY THROUGH THE BOX SECTION).

INSTALLING YOUR GUIDE RUNNERS TO THE ROLLER GARAGE DOOR TOP BOX

1. The 'F' on the guide runners represents the front of the guide runners so on a behind fit the 'F' should be against the brick work and on a between fit the 'F' should be facing out of the garage when looking from inside.
2. Remove the plastic covering from the roller garage door top box and the guide runners.
3. Place the guide runners against the wall where they are going to be fitted. With two or more people, lift the roller garage door top box into place and slot the guide runners into the end plates of the roller garage door top box then position.



4. Either using clamps or a person holding the door in place, line the garage door where you would like it and drill the top predrilled fixing holes on each guide runner with a 7mm masonry drill bit into the brick work.



5. Using the screws and plugs provided, take one with the rawlplug on the end of the screw, push the fixing through the predrilled hole into the brick work and tighten. Do this both sides and your door is secure enough now to level each guide runner using a spirit level. Drill the rest of the predrilled holes and secure to the wall.

TWF55 INSTALLING THE GARAGE DOOR CURTAIN

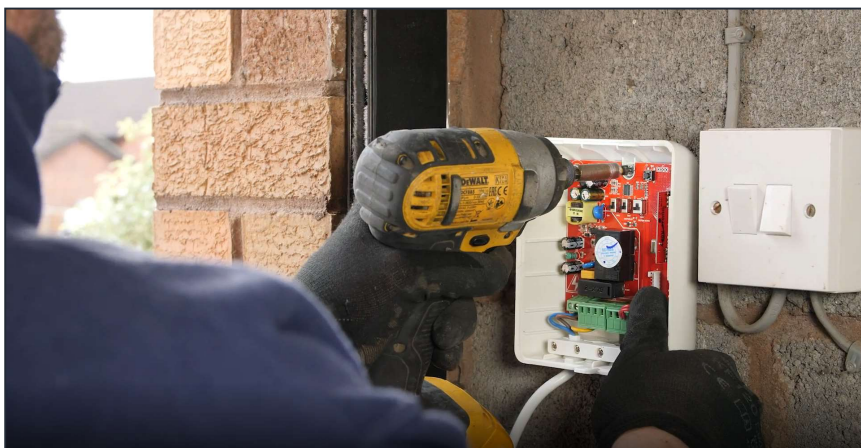
1. Unscrew the back case and remove. For a TWF55 Roller Garage Door the curtain is already rolled up into the top box. Cut the string holding the curtain, remove the packaging and place the base rail into the guide runners.



2. For a TWF77 please see page 9.

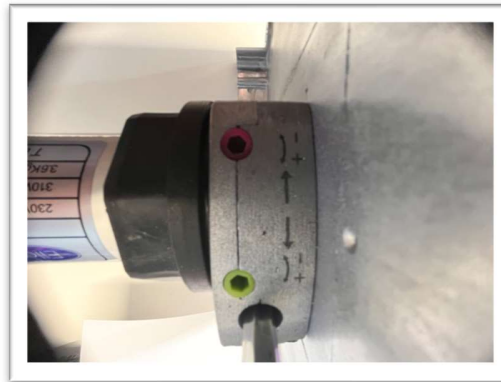
INSTALLING THE RECIEVER BOX

1. Remove the receiver box provided from its packaging and remove the front to reveal the fixing point holes. On the motor side of the installed roller garage door, fix the receiver box to the wall in a convenient place for you to use. (MAKE SURE IT IS CLOSE ENOUGH FOR THE MOTOR WIRE TO REACH).
2. All wiring instructions are emailed to you. If your door is supplied with a safety edge kit, please ensure you thoroughly read the info before attempting to set up the control box. Please call if you are unsure.



SETTING THE DOOR LIMITS

At the motor side there are two hex holes on the underside of the motor with + and - symbols. These hex holes will be used to set your up and down limits - the position of the door when its open and closed.



With the back case off the door, at the motor end you will see 2 x hex holes on the bottom of the motor. Looking from inside your garage out, the hex hole closest to you will adjust the down limit and the other hex hole will adjust your up limit.

Before adjusting your door limits, make sure your door controls are set to fully automatic, so 1 x push on the up button to open the door and 1 x push on the down button to close the door. If the door is not on fully automatic, please refer to the instructions provided.

To set the door limits press the down button on the receiver box - your door should stop before it reaches the floor (**IF IT DOES NOT STOP THEN PLEASE STOP THE DOOR BEFORE IT REACHES THE FLOOR**). If the door has stopped by itself before reaching the floor then press the down button on the receiver box again and place the hex shaped wand provided into the down limit hex hole and turn towards the + symbol, you will see your door lowering while you are turning towards the + symbol. Carry on lowering the door until it has touched the floor and all the door slats are locked together.

If your door did not stop on its own before reaching the floor, then press the up button on the receiver box and stop the door curtain halfway open. Place the hex wand in the down hex hole limit and turn 10 times towards the - symbol then press down again and make sure the door stops before it reaches the floor. If again, it does not stop then keep repeating this action until it does.

Once your door has stopped by itself before reaching the floor, then press the down button on the receiver box place the hex shaped wand into the down limit hex hole and turn towards the + symbol and follow instructions above.

To set your up limit press the up button on your receiver box and follow the same instructions as above, the up-limit hex hole will be the opposite to the down limit.

IMPORTANT – WHEN THE DOOR IS OPEN AND THE UP LIMIT IS FULLY SET, YOU NEED TO HAVE THE BASERAIL (LAST SLAT WITH RUBBER SEAL) IN THE GUIDE RUNNERS, VISIBLE BELOW THE TOPBOX. IF YOUR BASERAIL IS TOO HIGH, PLEASE RESET THE UP LIMIT SO THE WHOLE BASERAIL IS VISABLE IN THE GUIDE RUNNERS

Once your door is fully installed, lower the door to the down position. Drill a 7mm hole through the cast end plates where you can get a fixing in to the wall or lintel. Use the fixings provided to secure the topbox.

MOTOR WIRE COLOURS (if you have a safety edge, please refer to the wiring on the instructions in the box or attached to your delivery information email).

EARTH / YELLOW

BLUE / COMMON

BROWN / BLACK - MOTOR UP AND DOWN

PLEASE NOTE:

The motor is fitted with a thermal cut out safety feature. If the motor gets hot it will cut out for up to 30 minutes. This may happen once on the day of installation, during the process of setting the limits.

IF YOU REQUIRE ANY ASSISTANCE DURING INSTALLATION PLEASE CONTACT OUR TECHNICIANS:

01603 737183 WEEKDAYS

07834 408089 WEEKENDS



TWF77 ROLLER GARAGE DOORS

1. Follow instructions on TWF55 how to cut guide runners and install your roller garage door.
2. Once your top box and guide runners have been installed drill a hole in each of the end plates with a 7mm metal drill bit and secure to brick work or lintel with the fixings provided.
3. As there is more weight in the TWF77 roller garage door, the door curtain is separate. Once you have installed your guide runners and top box, unscrew the screws holding the white plastic rings to the barrel of the door and remove the springs.



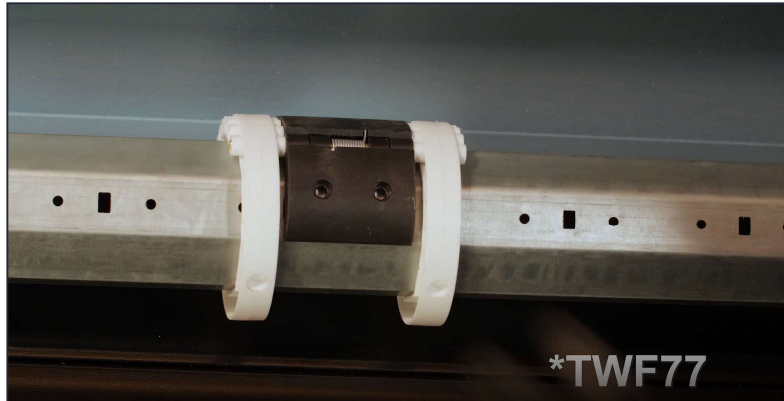
4. Place the springs on the top slat of the roller garage door curtain.



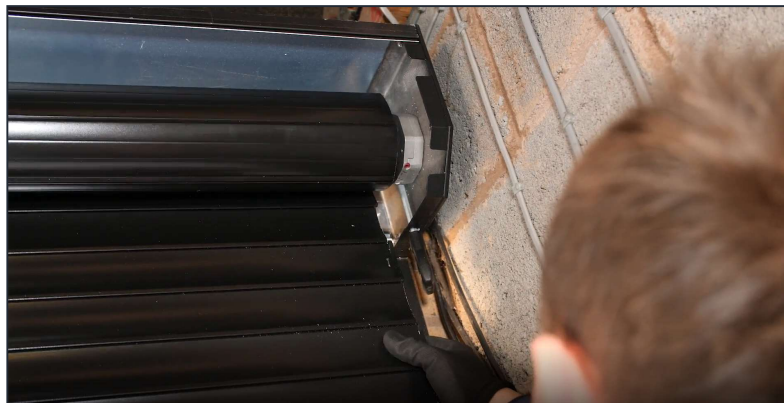
5. Press the down button on the receiver box until the motor has stopped moving the barrel.

(PLEASE MAKE SURE THE MOTOR IS TURNING IN THE RIGHT DIRECTION)

6. With two or more people, lift the roller garage door curtain into place and attach the security springs to the white rings (PLEASE MAKE SURE YOU USE THE SAME HOLES ON ALL THE SETS OF WHITE RINGS). Please refer to our video.



7. Tighten the screws **by hand** back into the plastic rings so they do not move (**HAND TIGHTEN THE SCREWS- DO NOT DRILL**)
8. Holding the curtain, press the up button on the receiver box and the curtain will roll itself on to the roller garage door barrel (PLEASE LINE THE DOOR CURTAIN UP WHILE ROLLING IT ON TO THE BARREL SO IT DOES NOT CATCH ANYTHING). Please refer to our installation video.



9. Place the base rail of the roller garage door curtain into the guide runners and set the up and down limits the same as the TWF55 roller garage door.

SAFETY BRAKE

All TWF77 Roller doors are fitted with a safety brake, this is the wire on the opposite end to the motor.

If you have purchased a safety edge with the door, please refer to the wiring instructions provided.

If you are unsure, please don't hesitate to contact a member of our team.



WARNING

WHEN OPERATING UP OR DOWN, PLEASE MAKE SURE YOU ARE IN FULL SIGHT OF THE DOOR AT ALL TIMES.

THE DOOR IS TO BE OPERATED BY ADULTS OVER THE AGE OF 18.

All doors purchased with remote fobs need to be supplied with a safety edge kit. Failure to purchase the correct safety edge kit will result in a void warranty.



TWF Roller Garage Doors Ltd
Units 1 & 4 Tradebase
The Street
Catfield
NR29 5AA

T: 01603 737183
M: 07834 408089
E: sales@twf-rollergaragedoors.co.uk
W: twf-rollergaragedoors.co.uk

Updated June 2025